

# HPCO<sub>2</sub> Component Description

## Discharge Head, Grooved Nut



Effective: January 2019

K-81-1070 Rev AD

P/N: 81-872442-000

### FEATURES

- Forged brass parts
- Integral check feature
- Swivel Connection onto Discharge Valve (1/2" or 5/8")
- 0°F (-18°C) to 130°F (55°C) agency temperature range
- Underwriters' Laboratories Listed - File Number EX923
- Factory Mutual Approved - Standard 5420
- United States Coast Guard Approved
- Various marine Class Society Approvals

### DESCRIPTION

The grooved nut discharge head attaches to the discharge valve on a Kidde High Pressure Carbon Dioxide (CO<sub>2</sub>) cylinder assembly secured at the project site. The discharge head uses CO<sub>2</sub> pressure to open the discharge valve. Pressure may be applied only from the cylinder, when fitting a control head to the discharge valve. To differentiate the groove nut discharge head from the plain nut discharge head, a pair of grooves are notched into the swivel nut for visual identification.

The discharge head also features a metal to metal check, which eliminates the need for a separate check valve at each manifold connection.

Typical projects utilizing the groove nut discharge head include single cylinder main and reserve systems or hoseline systems, among others.

A discharge flex hose connects the discharge head to the system manifold. Alternatively, a swivel adapter may be used in place of a discharge flex hose to connect to the system manifold. A discharge head needs to be ordered for each cylinder assembly.

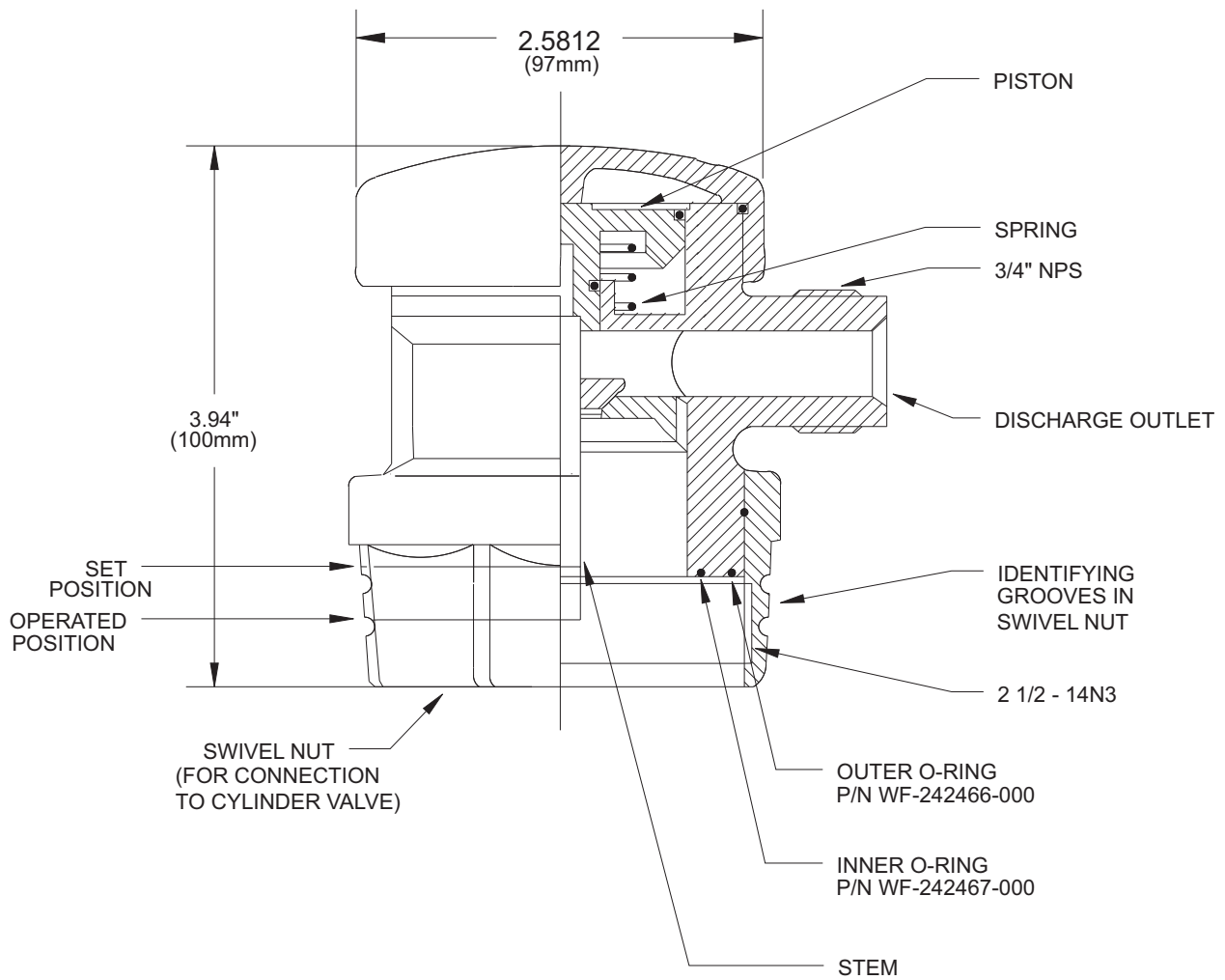


### ORDERING INFORMATION

Description	Part Number
Discharge Head, Grooved Nut	81-872442-000

### REFERENCED COMPONENTS

Description	Reference Data Sheet
Cylinder & Valve Assembly, 75/100-lbm	K-81-1010
Cylinder & Valve Assembly, 25/35/50-lbm	K-81-1020
Discharge Head, Plain Nut	K-81-1060
Discharge Hose, 1/2" NPT	K-81-1080
Discharge Hose, 3/4" NPT	K-81-1090
Adapter, Swivel	K-81-1105



## MATERIALS

**BODY: BRASS**

**O-RINGS: RUBBER**

**SPRING: STAINLESS STEEL**

**STOP CHECK: BRASS**

## EXPORT INFORMATION (USA)

Jurisdiction: EAR

Classification: EAR99

This document contains technical data subject to the EAR.

KIDDE is a registered trademark of Kidde-Fenwal, Inc., or its parents, subsidiaries or affiliates.

This literature is provided for informational purposes only. KIDDE-FENWAL, INC. believes this data to be accurate, but it is published and presented without any guarantee or warranty whatsoever. KIDDE-FENWAL, INC. assumes no responsibility for the product's suitability for a particular application. Product features specified are only applicable when the fire suppression system is correctly designed, installed, maintained and serviced by trained, authorized Kidde Fire Systems distributors as per the applicable design, installation, operation, and maintenance manuals. If you need more information on this product, or if you have a particular problem or question, contact: KIDDE-FENWAL, INC., Ashland, MA 01721 USA, Telephone: (508) 881-2000.